

[MeetingPlaza Global Highway]

User Guide

Version 9.0

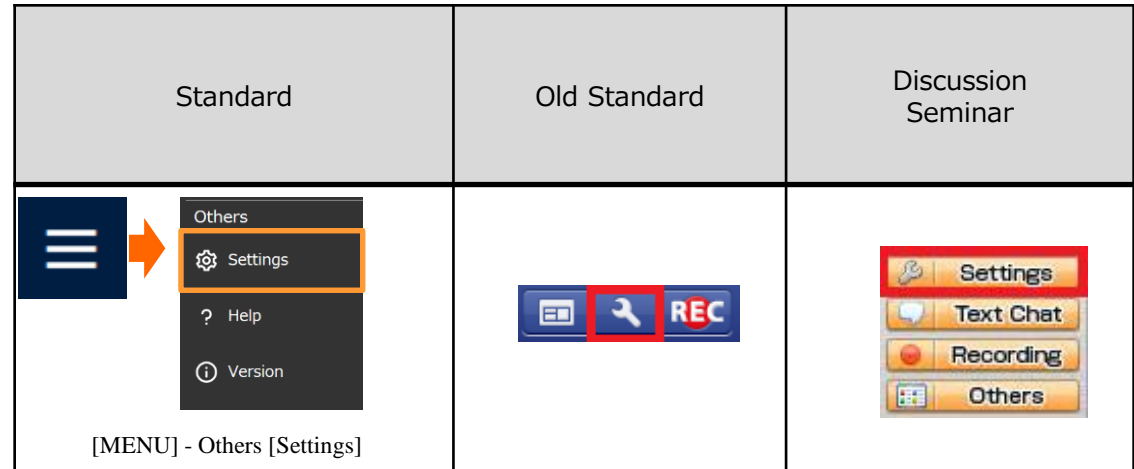
Version 2, January 29th, 2019

For Participants

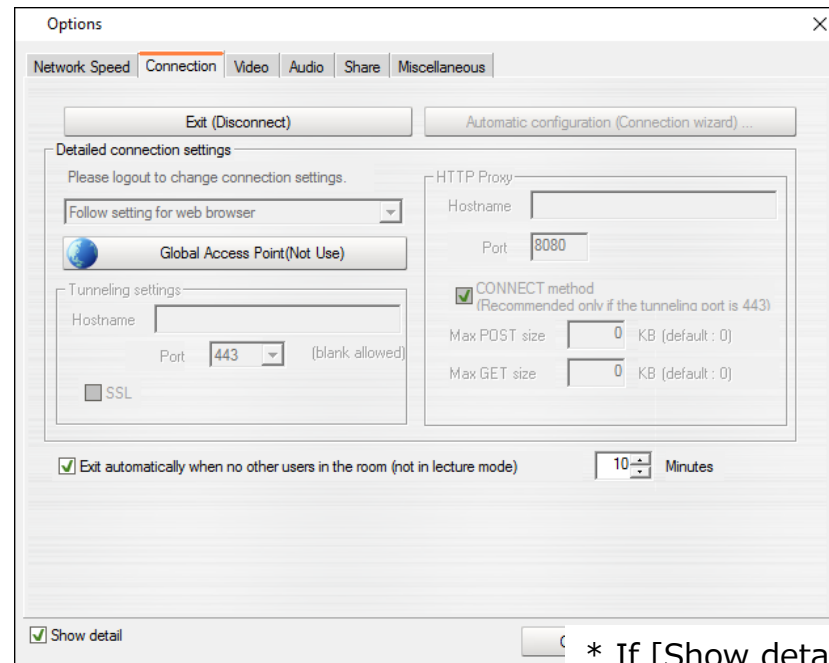
Settings of Glogal highway Access Point

[MeetingPlaza Global Highway] User Guide

1. After stepping into a conference room, click [Settings].



2. To open the settings window, clicking "connect" tab.

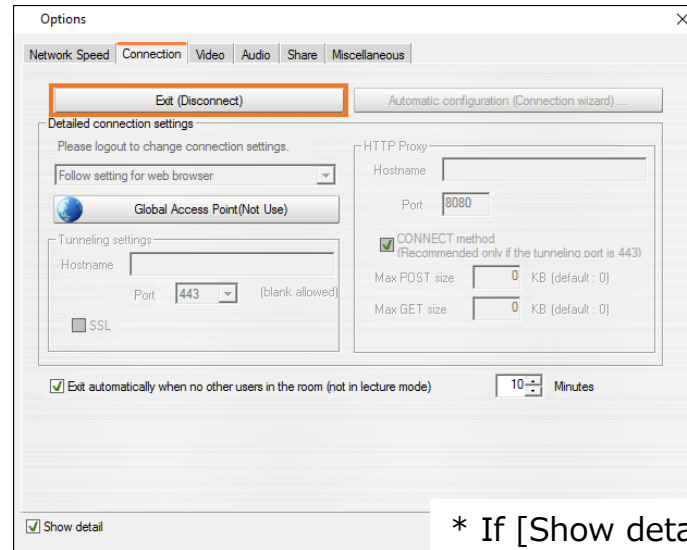


* If [Show detail] is ON.

[MeetingPlaza Global Highway] User Guide

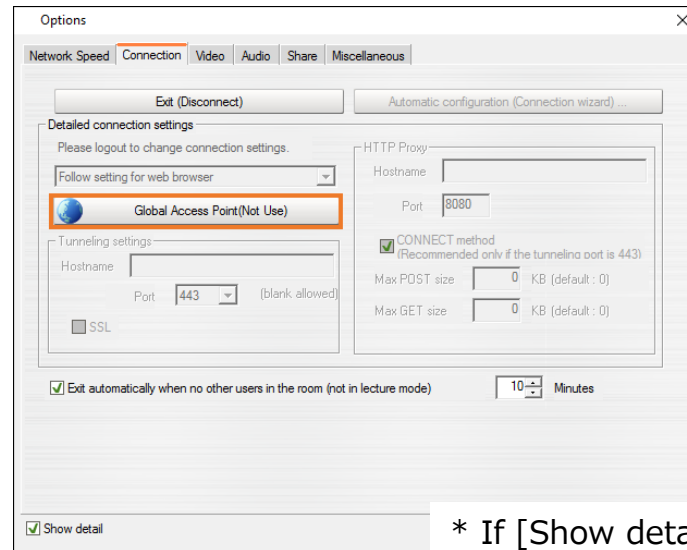
3. Clicking [Terminate connection/Logout] to disconnect to server.

User can set Global highway access point without connection to sever.



* If [Show detail] is ON.

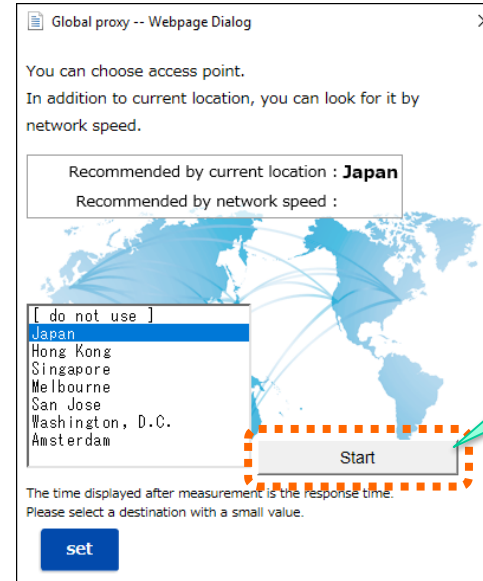
4. Click [Global highway access point].



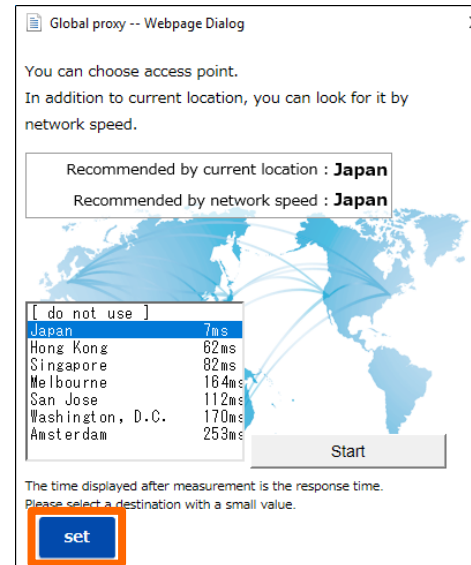
* If [Show detail] is ON.

[MeetingPlaza Global Highway] User Guide

5. Choosing an access point when global highway settings window is opened. Clicking [Start] to search the nearest available access point.

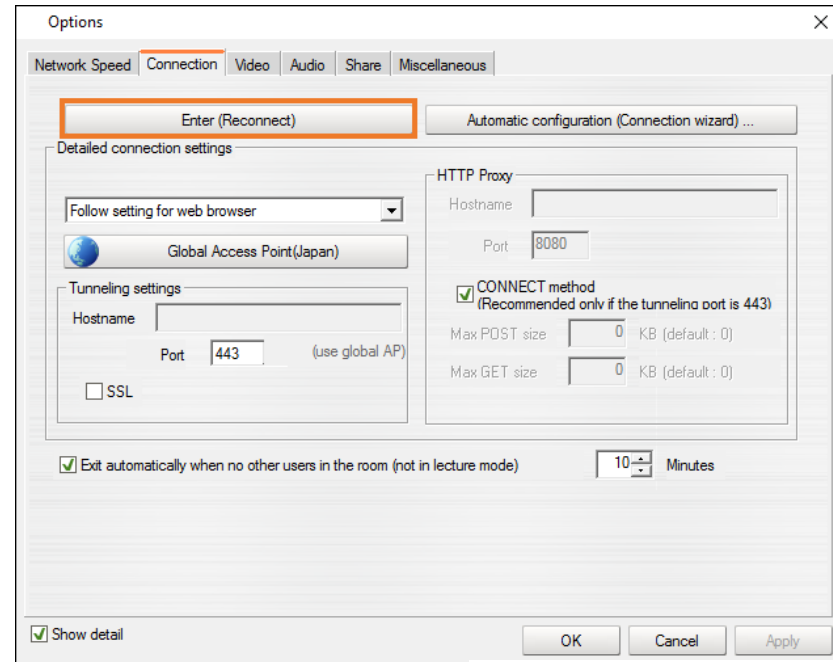


6. Clicking [Settings] to close the global highway settings window.



[MeetingPlaza Global Highway] User Guide

7. Under settings, clicking [reconnection/login] to re-connect to a server.



* If [Show detail] is ON.